



IFC's PERFORMANCE STANDARDS: AN EMERGING GLOBAL STANDARD

REIDAR KVAM

SENIOR MANAGER

ENVIRONMENT, SOCIAL AND GOVERNANCE DEPARTMENT,

OVERVIEW



IFC Performance Standards on Environmental and Social Sustainability

Effective January 1, 2012

- IFC's Performance Standards
- Cross-cutting themes
- Management systems
- Resources
- Questions and answers

EIGHT PERFORMANCE STANDARDS



PS1: Assessment and Management of E&S Risks and Impacts



PS2: Labor and Working Conditions



PS3: Resource Efficiency and Pollution Prevention



PS4: Community Health, Safety and Security



PS5: Land Acquisition and Involuntary Resettlement



PS6: Biodiversity Conservation and Sustainable Management of Living Natural Resources



PS7: Indigenous Peoples




PS8: Cultural Heritage

PS1:ASSESSMENT AND MANAGEMENT OF



OBJECTIVES

- Identify project E&S risks and impacts
 - Adopt mitigation hierarchy
 - Anticipate, avoid
 - Minimize
 - Compensate or offset
 - Improve performance through an environmental and Social Management System (ESMS)
 - Engagement with Affected Communities, other stakeholders
 - Throughout project cycle
 - Includes communications, grievance mechanisms
-  International Finance Corporation

PS2: LABOR AND WORKING CONDITIONS

OBJECTIVES

- Fair treatment, non-discrimination, equal opportunity
- Good worker – management relationship
- Comply with national employment and labor laws
- Protect workers, in particular vulnerable categories
- Promote safety and health
- Avoid use of forced labor or child labor

PS3: RESOURCE EFFICIENCY AND POLLUTION PREVENTION

OBJECTIVES

- Avoid or minimize project-related pollution and protect human health and the environment
- Promote sustainable use of resources, including energy and water
- Reduce project-related Greenhouse Gas (GHG) emissions

PS4: COMMUNITY HEALTH, SAFETY AND SECURITY



OBJECTIVES

- To anticipate and avoid adverse impacts on the health and safety of the Affected Community
- To safeguard personnel and property in accordance with relevant human rights principles

PS5: LAND ACQUISITION AND INVOLUNTARY RESETTLEMENT

OBJECTIVES

- Avoid, minimize adverse social and economic impacts from land acquisition or restrictions on land use
 - Avoid or minimize displacement (through alternative project designs)
 - Avoid forced eviction
- Improve or restore livelihoods and standards of living
- Improve living conditions among displaced persons
 - Adequate housing
 - Security of tenure

PS6: BIODIVERSITY CONSERVATION AND SUSTAINABLE MANAGEMENT OF LIVING NATURAL RESOURCES



OBJECTIVES

- Protection and conservation of biodiversity
- Maintenance of benefits from ecosystem services
- Promotion of sustainable management of living natural resources
- Integration of conservation needs and development priorities

PS7: INDIGENOUS PEOPLES



OBJECTIVES

- Ensure full respect for IPs'
 - Human rights, dignity, aspirations
 - Livelihoods
 - Culture, knowledge, practices
- Avoid, minimize adverse impacts
- Sustainable and culturally appropriate development benefits and opportunities
- Free, Prior and Informed Consent (FPIC) in certain circumstances

PS8: CULTURAL HERITAGE



OBJECTIVES

- Protection and preservation of cultural heritage
- Promotion of equitable sharing of cultural heritage benefits

EIGHT PERFORMANCE STANDARDS



PS1: Assessment and Management of E&S Risks and Impacts



PS2: Labor and Working Conditions



PS3: Resource Efficiency and Pollution Prevention



PS4: Community Health, Safety and Security



PS5: Land Acquisition and Involuntary Resettlement



PS6: Biodiversity Conservation and Sustainable Management of Living Natural Resources



PS7: Indigenous Peoples



PS8: Cultural Heritage

IMPORTANT TOPICS AND CROSS-CUTTING THEMES



PS1: Assessment and Management of E&S Risks and Impacts



PS2: Labor and Working Conditions



PS3: Resource Efficiency and Pollution Prevention



PS4: Community Health Safety and Security



PS5: Land Acquisition and Involuntary Resettlement



PS6: Biodiversity Conservation and Sustainable Management of Living Natural Resources



PS7: Indigenous Peoples



PS8: Cultural Heritage

IMPORTANT TOPICS AND CROSS-CUTTING THEMES

Biodiversity

Ecosystems

Climate Change

Water

Resource
Efficiency

Energy



PS1: Assessment and Management of E&S Risks and Impacts



PS2: Labor and Working Conditions



PS3: Resource Efficiency and Pollution Prevention



PS4: Community Health Safety and Security



PS5: Land Acquisition and Involuntary Resettlement



PS6: Biodiversity Conservation and Sustainable Management of Living Natural Resources



PS7: Indigenous Peoples



PS8: Cultural Heritage

IMPORTANT TOPICS AND CROSS-CUTTING THEMES

Biodiversity

Ecosystems

Climate Change

Water

Resource
Efficiency

Energy

Stakeholders
and Participation

Health, safety
and security

Vulnerability

Gender

Grievance Mechanisms

Free, Prior and
Informed Consent

Human Rights



PS1: Assessment and Management of E&S Risks and Impacts



PS2: Labor and Working Conditions



PS3: Resource Efficiency and Pollution Prevention



PS4: Community Health Safety and Security



PS5: Land Acquisition and Involuntary Resettlement



PS6: Biodiversity Conservation and Sustainable Management of Living Natural Resources



PS7: Indigenous Peoples



PS8: Cultural Heritage

QUESTIONS SO FAR?



PS1: Assessment and Management of E&S Risks and Impacts



PS2: Labor and Working Conditions



PS3: Resource Efficiency and Pollution Prevention



PS4: Community Health Safety and Security



PS5: Land Acquisition and Involuntary Resettlement



PS6: Biodiversity Conservation and Sustainable Management of Living Natural Resources



PS7: Indigenous Peoples



PS8: Cultural Heritage

ESTABLISHING THE APPROPRIATE MANAGEMENT SYSTEM

- Policy
- Identification of risks and impacts
- Management programs
- Organizational capacity and competency
- Emergency preparedness and response
- Stakeholder engagement, transparency, and grievance redress
- Monitoring and review



ASSESSMENT & MANAGEMENT APPROACH

ASSESSMENT & MANAGEMENT APPROACH

Analysis

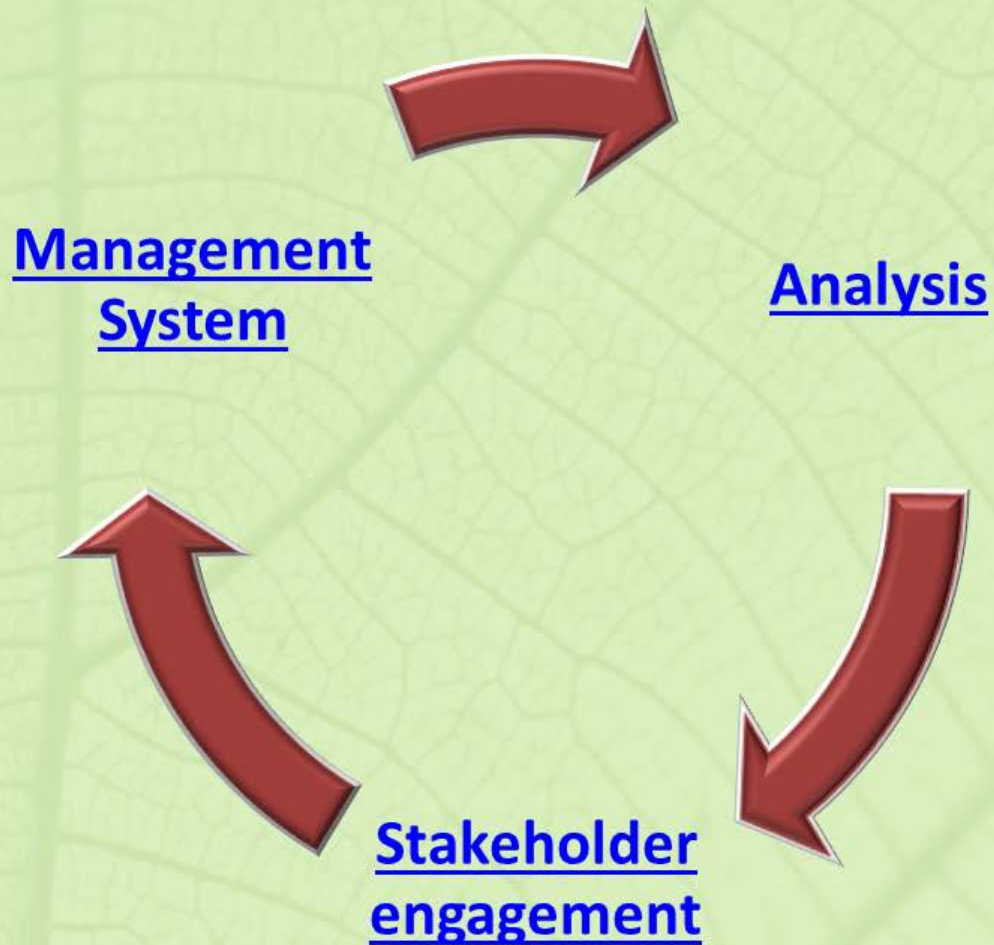
ASSESSMENT & MANAGEMENT APPROACH

Analysis



Stakeholder
engagement

ASSESSMENT & MANAGEMENT APPROACH



SUPPORT AND GUIDANCE MATERIALS



IFC Performance Standards on Environmental and Social Sustainability

Effective January 1, 2012

SUPPORT AND GUIDANCE MATERIALS



IFC Performance Standards on
Environmental and Social Sustainability



Norma de Desempeño 7 Pueblos indígenas

1 de enero de 2012

Introducción
Social



绩效标准 7 土著居民

2012 年 1 月 1 日

1. El
hacia e
Marco

简介

1. 国际金融公司（IFC）《可持续性框架》详细阐述了公司风险管理不可或缺的一部分。《可持续性框架》包括和《国际金融公司信息使用政策》。《环境和社会可持续性

SUPPORT AND GUIDANCE MATERIALS



Guidance Note 1

Assessment and Management of Environmental and Social Risks and Impacts

January 1, 2012

Guidance Note 1 corresponds to the application of Performance Standard 1. Please refer to IFC's *Interpretation Note on Financial Intermediaries* for application of Performance Standard 1 to various types of financial intermediaries, funds, and other facilities. Please also refer to Performance Standards 2–8, as well as their corresponding Guidance Notes for additional information. Information on all referenced materials appearing in the text of this Guidance Note can be found in the Bibliography.

Introduction

1. *Performance Standard 1 underscores the importance of managing environmental and social performance throughout the life of a project. An effective Environmental and Social Management System (ESMS) is a dynamic and continuous process initiated and supported*



Norma de Desempeño 7 Pueblos indígenas

1 de enero de 2012

Introducción
Social



绩效标准 7 土著居民

2012 年 1 月 1 日

1. El
hacia e
Marco

简介

1. 国际金融公司（IFC）《可持续性框架》详细阐述了公司风险管理不可或缺的一部分。《可持续性框架》包括和《国际金融公司信息使用政策》。《环境和社会可持续性

SUPPORT AND GUIDANCE MATERIALS



IFC Performance Standards on
Environmental and Social Sustainability



Norma de Desempeño 7 Pueblos indígenas

1 de enero de 2012

Introducción
Social



绩效标准 7 土著居民

2012 年 1 月 1 日

1. El
hacia e
Marco

简介

1. 国际金融公司（IFC）《可持续性框架》详细阐述了
司风险管理
和《国际



Guidance Note 1

Assessment and Management of Environmental and Social Risks and Impacts

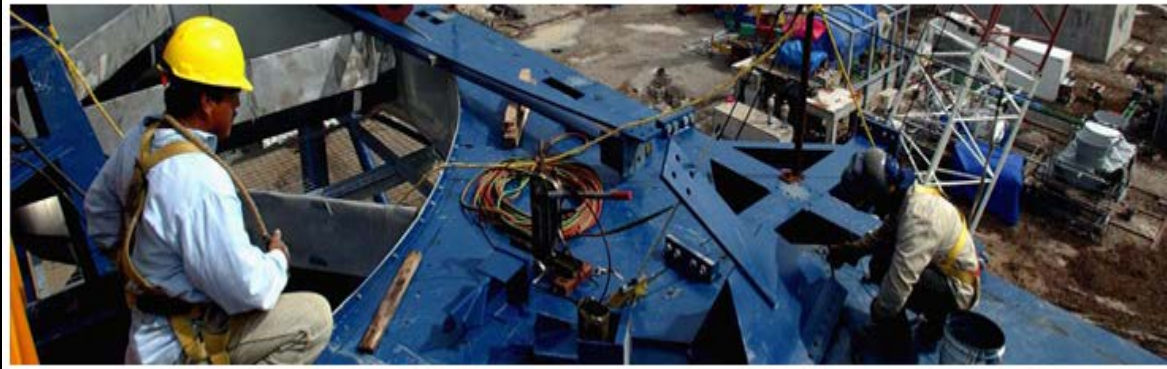
January 1, 2012

Guidance Note 1 corresponds to the application of Performance Standard 1. Please refer to IFC's *Interpretation Note on Financial Intermediaries* for application of Performance Standard 1 to various types of financial intermediaries, funds, and other facilities. Please also refer to Performance Standards 2–8, as well as their corresponding Guidance Notes for additional information. Information on all referenced materials appearing in the text of this Guidance Note can be found in the Bibliography.

Introduction

1. *Performance Standard 1 underscores the importance of managing environmental and social performance throughout the life of a project. An effective Environmental and Social Management System (ESMS) is a dynamic and continuous process initiated and supported*

Environmental, Health, and Safety Guidelines



SUPPORT AND GUIDANCE MATERIALS



IFC Performance Standards on
Environmental and Social Sustainability



Norma de Desempeño 7 Pueblos indígenas

1 de enero de 2012

Introducción
Social

1. El
hacia el
Marco



绩效标准 7 土著居民

2012 年 1 月 1 日

简介

1. 国际金融公司（IFC）《可持续性框架》详细阐述了
公司风险管理
和《国际



Guidance Note 1

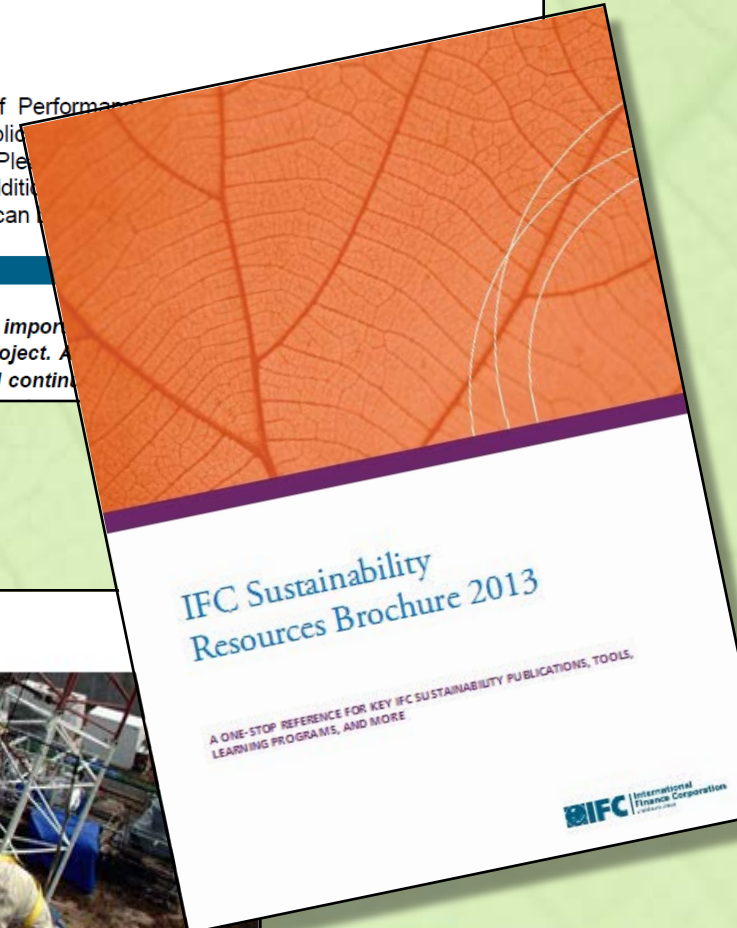
Assessment and Management of Environmental and Social Risks and Impacts

January 1, 2012

Guidance Note 1 corresponds to the application of Performance
Interpretation Note on Financial Intermediaries for application
of financial intermediaries, funds, and other facilities. Please
well as their corresponding Guidance Notes for additional
materials appearing in the text of this Guidance Note can

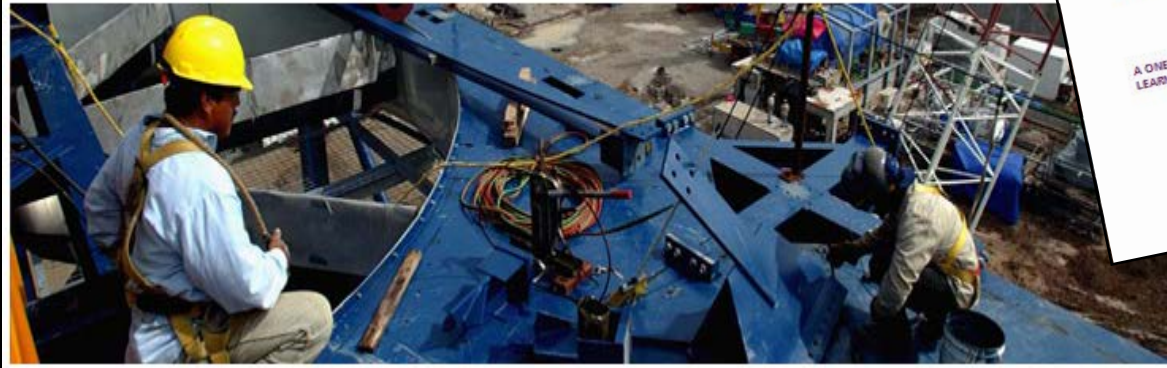
Introduction

1. Performance Standard 1 underscores the importance of
social performance throughout the life of a project. A
Management System (ESMS) is a dynamic and continuing



IFC Sustainability Resources Brochure 2013

A ONE-STOP REFERENCE FOR KEY IFC SUSTAINABILITY PUBLICATIONS, TOOLS,
LEARNING PROGRAMS, AND MORE





Thank you!

For more information:

asksustainability@ifc.org

www.ifc.org/sustainability