

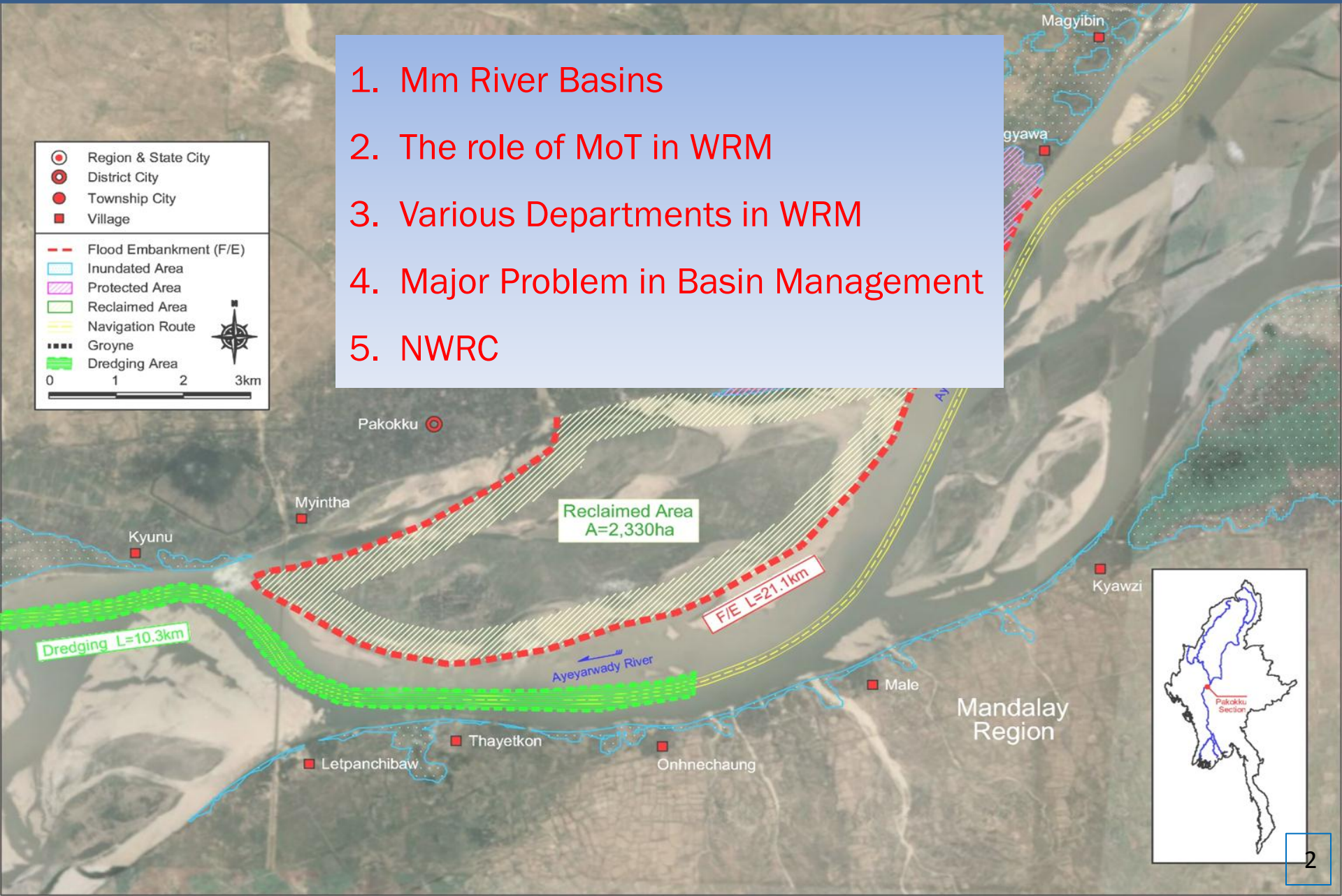
# River Basins Management in Myanmar

Nay Pyi Taw, Myanmar  
20th January, 2014

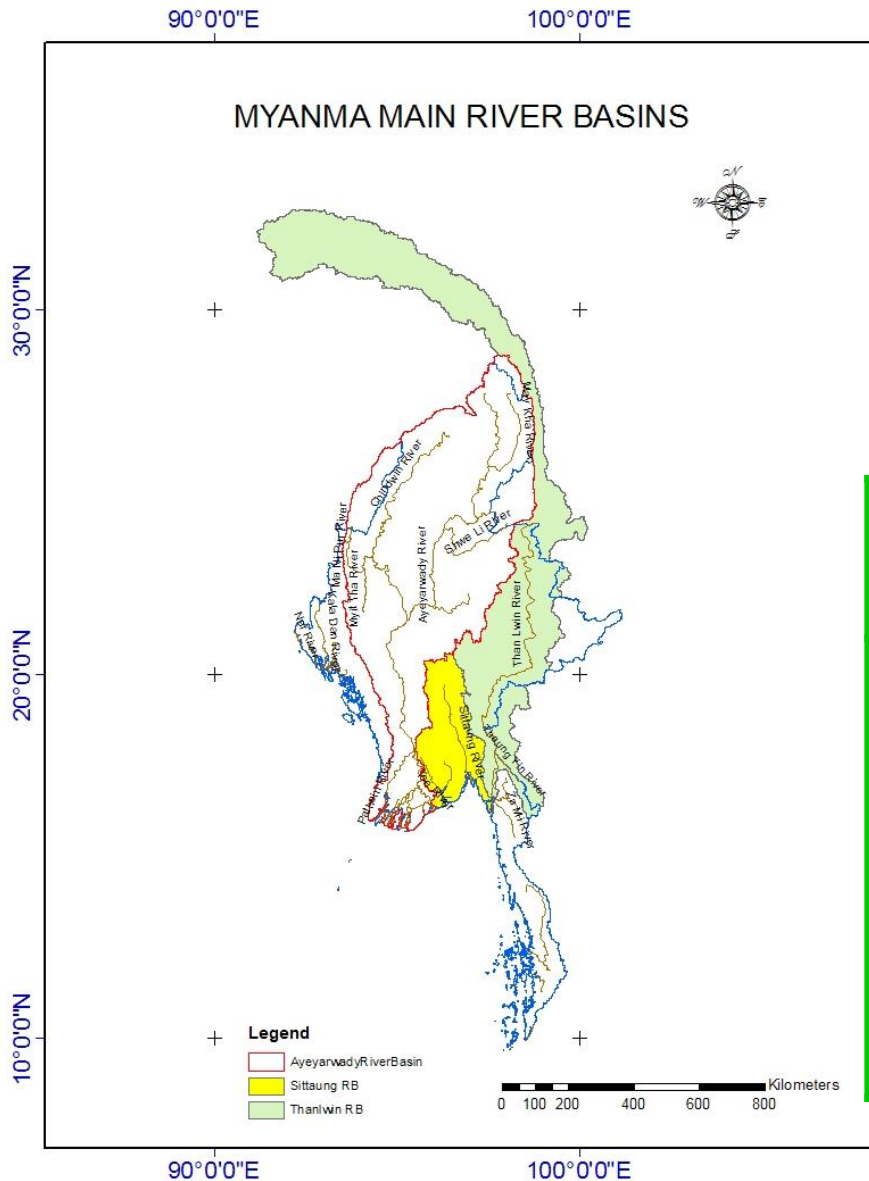
Presented by  
**ZAW WIN, DWIR**

# Outlines

1. Mm River Basins
2. The role of MoT in WRM
3. Various Departments in WRM
4. Major Problem in Basin Management
5. NWRC



# 1. Main river basins in Myanmar

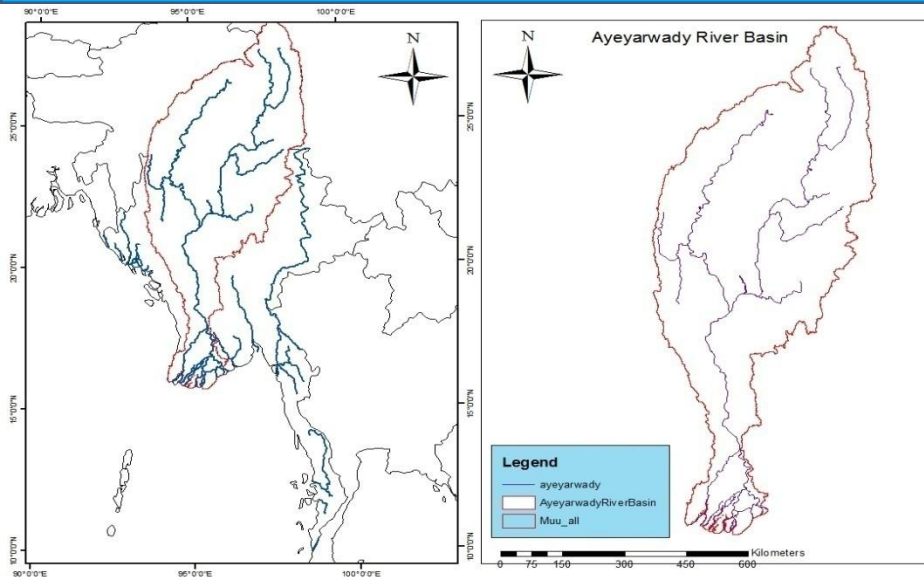


Major River Basins in Myanmar

River	Length (km)	Catchment Area (Sq. Km)	Remark
Ayeyarwady	2000+	2,88,900	~ 43% of Country
Chindwin	1100	1,15,300	~ 17 %
Sittaung	420	34,395	
Thanlwin	2410 (1040)*	1,58,000	( )* Myanmar territory ~23%
Kaladan	650 (257)*	22,611	( )* Myanmar territory

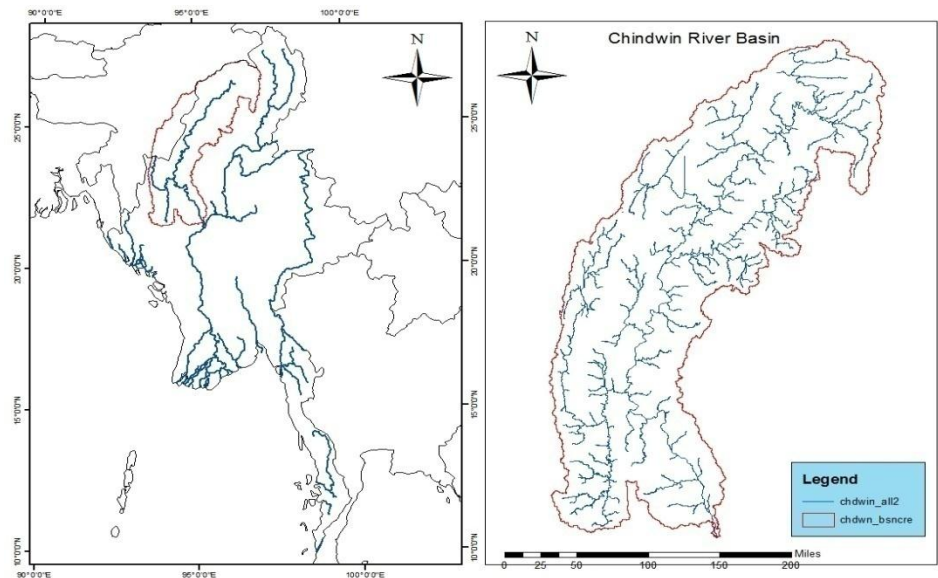
Source: DWIR

# 1. Main river basins in Myanmar



Ayeyarwady river basin

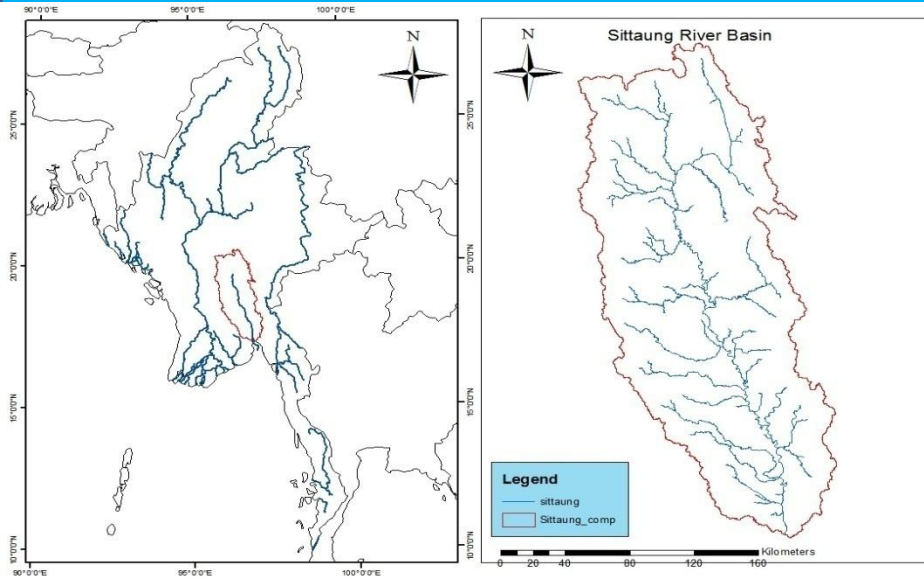
River	Length (km)	Catchment Area (Sq. Km)	Remark
Ayeyarwady	2000+	2,88,900	~ 43% of Country
Chindwin	1100	1,15,300	~ 17 %



Chindwin river basin

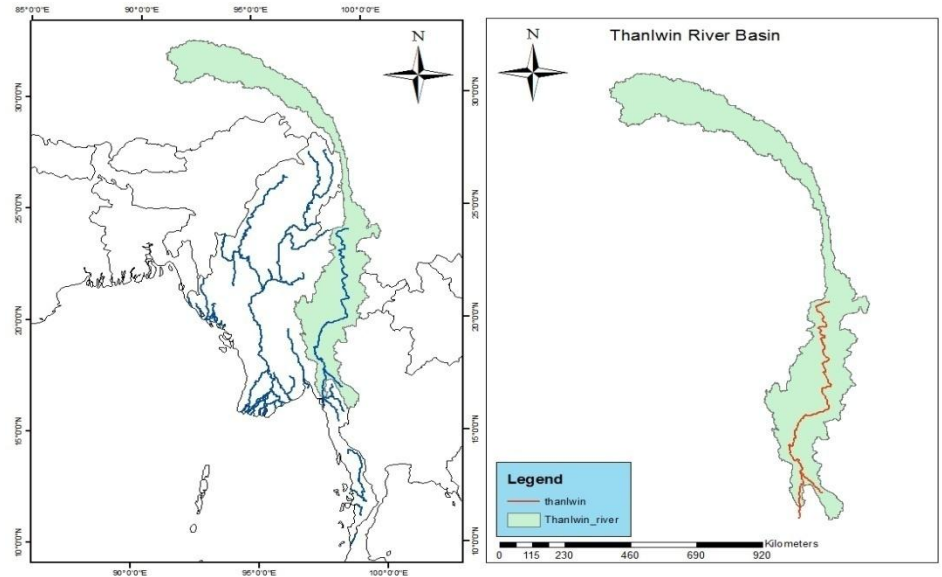
Source: DWIR

# 1. Main river basins in Myanmar



Sittaung river basin

River	Length (km)	Catchment Area (Sq. Km)	Remark
Sittaung	420	34,395	( )* Myanmar territory ~23%
Thanlwin	2410 (1040)*	1,58,000	



Thanlwin river basin

Source: DWIR

## 2. The Role of MoT in WRM

### Ministry of Transport

1. Department of Transport
2. Department of Civil Aviation
3. Department of Marine Administration
4. Department of Meteorology and Hydrology (DMH)
5. Directorate of Water Resources and Improvement of River Systems (DWIR)
- 6. Myanmar Mercantile Marine College**
- 7. Myanmar Maritime University**
8. Inland Water Transport
9. Myanma National Airways
10. Myanma Port Authority
11. Myanma Shipyards

## 2. The Role of MoT in WRM

DMH - for monitor and report the water quality and of develop indicators for watershed quality. DMH is also responsible for the survey and collection of meteorological and hydrological data of main river systems together with disseminating and sharing of water resources data with other water sector agencies

DWIR - River Management (for the implementation, management, development and use of water and water resources in the fields of transportation, pollution, protection of river banks and river systems and also responsible for collection of Hydrological data and Hydrographical survey for navigation)

# 3. Various Departments in WRM

Various agencies use water in various ways.

1. Forestry Department under MoECaF - for conservation, management, development and use of forest in sustainable manner. It is responsible for the reforestation programme and also to monitor deforestation and forest cover reduction in critical area.
2. Irrigation Department and Water Resources Utilization Department under Ministry of Agriculture and Irrigation
3. Department of Hydroelectric Power under Ministry of Electrical Power
4. Ministry of Industries
5. Department of Development Affairs under Local Governments, etc



## 4. Major Problem in Basin Management

Weak cooperation among water related agencies

## 5. NWRC

- It was necessary to promote cooperation between water related agencies.
- Myanmar needs to step up its water conservation measures and extend water supply coverage to ensure water security and availability across the country.
- That is why National Water Resources Committee has been established as an Apex body.

## 5. NWRC

### **The Vision**

**“ In 2020 Myanmar will become water efficient nation with well developed and sustainable water resources based on fully functional integrated water resources management system”**

### **The Mission**

**“ To provide various level of government, which include all organs of State, Regions and Union Territories, with the most need overarching national water policy to perform and cooperate with each other in mutual trust and good faith by implementing such policy and further development of respective rules, regulations, procedure and legislation on their own ”**

## 5. NWRC

1. National Water Resources Committee has been established by the Presidential decree on 25 July 2013
2. Expert Group has been organized by the Presidential decree in August 2013 to support NWRC in technical point of views

# 5. NWRC

Vice President  
(Chairperson)

Union Minister (Ministry of  
Transport)  
(vice chairperson)

## Union Ministers

## Deputy Ministers and Mayors

## State and Region Ministers

## Director Generals and others

1. Ministry of president office(1)
2. Ministry of Agriculture and Irrigation
3. Ministry of Livestock, Fisheries and Rural Development
4. Ministry of Environmental Conservation and Forestry
5. Ministry of Electric Power
6. Ministry of National Planning and Economic Development

1. Ministry of Border Affairs
2. Ministry of Transport
3. Ministry of Industry
4. Ministry of Health
5. Ministry of Construction
6. Mayor (Yangon)
7. Mayor (Mandalay)

1. Kachin State
2. Kayah State
3. Kayin State
4. Chin State
5. Mon State
6. Rakhine State
7. Shan State
8. Yangon Region
9. Mandalay Region
10. Magway Region
11. Sagaing Region
12. Bago Region
13. Ayeyarwady Region
14. Thanintharyi Region

1. General Administration Department
2. Water Resources Utilization Department
3. Irrigation Department
4. Environmental Conservation Department
5. Department of Hydropower Implementation
6. Department of Rural Development
7. Department of Fisheries
8. Department of Meteorology and Hydrology
9. Myanmar Maritime University
10. Advisor to President Office
11. Chairperson and Secretary of Expert Group

Secretary of NWRC

NWRC Secretariat

Expert Group

## 5. Achievements of Expert Group

1. Myanmar National Water Policy (Approved in Feb, 2014)
2. Myanmar Drinking Water Quality Standard (Approved in May, 2014)
3. Myanmar Water Framework Directives (Main Fundamental of Water Law)
4. Water Law (ongoing)

## 6. Where are solution?

1. River Basin Organization?
2. Promote human capacity in multidiscipline field?

Need more researches to solve the problems in River Basin Management

**Thank you for your kind attention**